

## Lesson 1.2.4

1-66.  $1, 5, \approx 8.54$

1-67. See below:

a.  $x = -7$

b.  $x = -1$

c.  $x = 9$

d.  $x = 34$

1-68. See below:

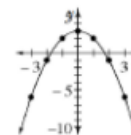
a. 7

b.  $-20$

c. 3

d.  $-5$

1-69. See graph at right. It is a parabola opening down. The vertex and maximum are at  $(0, 3)$ . There is a vertical line of symmetry through  $(0, 3)$ . The  $x$ -intercepts are approximately  $(-1.75, 0)$  and  $(1.75, 0)$ . There is a vertical line of symmetry through  $(0, 3)$ .



1-70. See below:

a. 8

b. 1

c.  $-2$

d. no solution